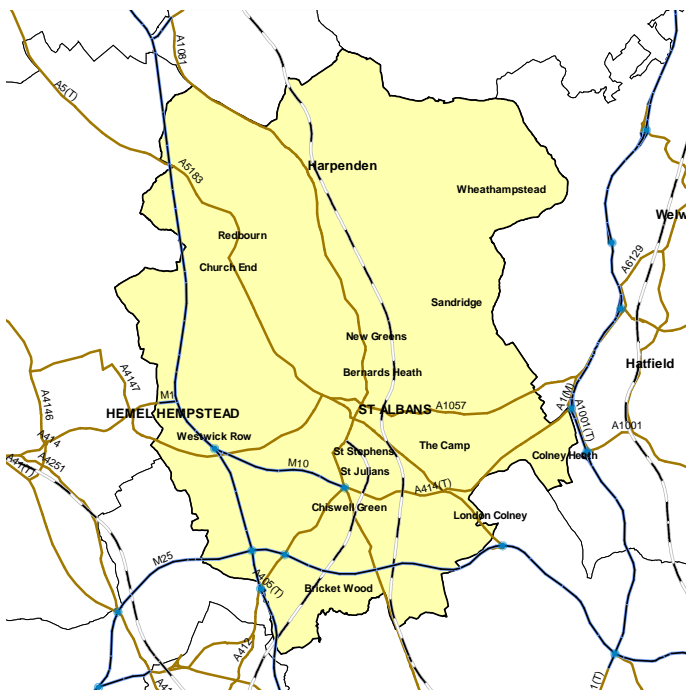


St Albans

This profile gives a snapshot of health in your area. With other local information, this Health Profile has been designed to support action by local government and primary care trusts to tackle health inequalities and improve people's health.

Health Profiles are funded by the Department of Health and produced annually by the Association of Public Health Observatories.

To view Health Profiles for other local authorities and to find out how they were produced, visit www.healthprofiles.info



POPULATION 131,000

Based on Ordnance Survey material. © Crown Copyright. All rights reserved. DH 100020290 2008. Other map data © Collins Bartholomew.

St Albans at a glance

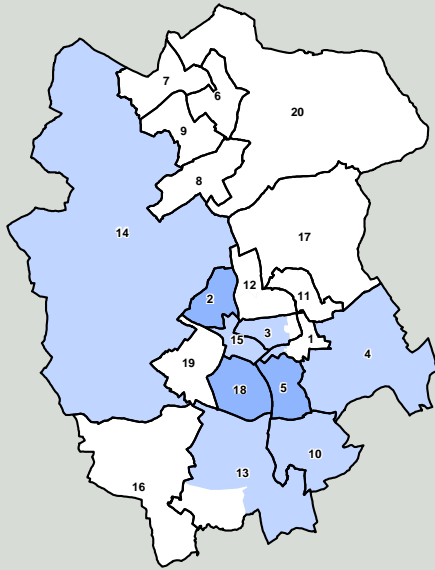
- The health of people in St Albans is generally better than the England average. However, the proportion of physically active children, and road injuries and deaths appear worse than the England average. Many indicators appear better than the England average including deprivation, children in poverty, GCSE achievement and violent crime. There are no valid data for breast feeding initiation.
- There are inequalities within St Albans by location, gender, level of deprivation and ethnicity. For example, men and women from the least deprived areas can expect to live over 4 years longer than those in the most deprived areas.
- Over the past ten years deaths from all causes, early deaths from cancer, heart disease and stroke have improved and are better than the England average.
- Although the proportion of adult smokers is better than the England average, smoking continues to kill around 160 adults in St Albans per year.
- Compared with the 2007 Health Profile, binge drinking in adults and adults who eat healthily are now significantly better than the England average.
- Priorities for action in St Albans include reducing smoking, particularly in wards with the highest levels, and reducing obesity in children and adults.
- For further information refer to the Annual Public Health Report from the "Publications" link at www.wherts-pct.nhs.uk

Deprivation: a national perspective

This map shows differences in deprivation between small areas in this local authority, *compared to the whole of England* (based on IMD 2007).

National deprivation groups

- 1 Least deprived fifth of areas in England
- 2
- 3
- 4
- 5 Most deprived fifth of areas in England



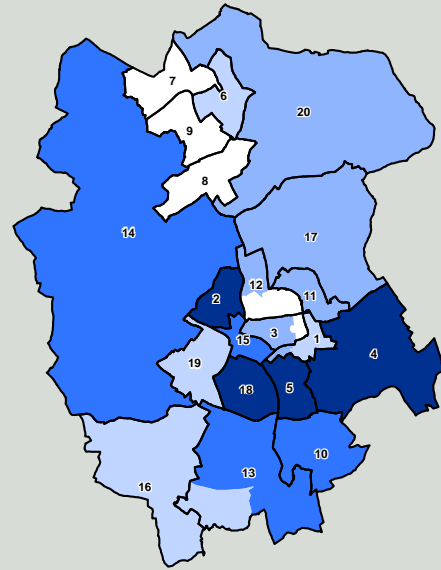
Based on Ordnance Survey material. © Crown Copyright. All rights reserved. DH 100020290 2008

Deprivation: a local perspective

This map shows differences in deprivation between small areas in this local authority, *compared to the local authority as a whole* (based on IMD 2007).

Local deprivation groups

- 1 Least deprived fifth in this local authority
- 2
- 3
- 4
- 5 Most deprived fifth in this local authority



Based on Ordnance Survey material. © Crown Copyright. All rights reserved. DH 100020290 2008

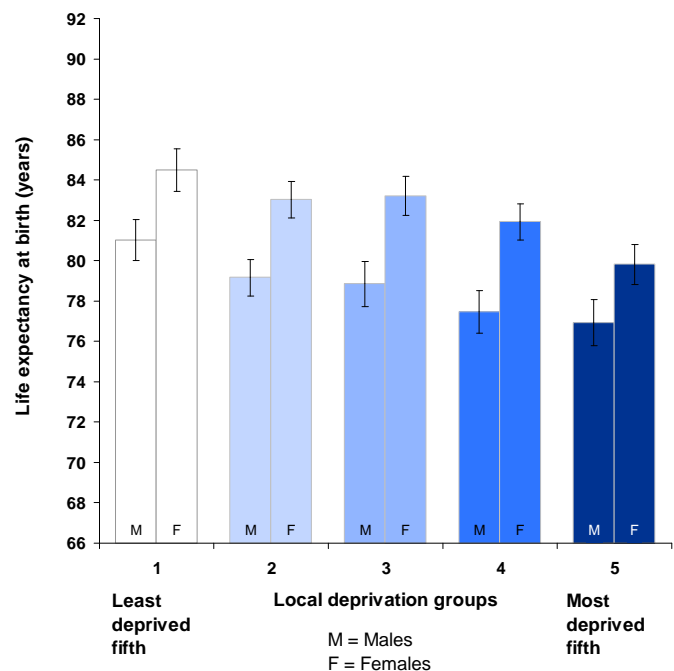
Ward legend

- 1 Ashley
- 2 Batchwood
- 3 Clarence
- 4 Colney Heath
- 5 Cunningham
- 6 Harpenden East
- 7 Harpenden North
- 8 Harpenden South
- 9 Harpenden West
- 10 London Colney
- 11 Marshalswick North
- 12 Marshalswick South
- 13 Park Street
- 14 Redbourn
- 15 St Peters
- 16 St Stephen
- 17 Sandridge
- 18 Sopwell
- 19 Verulam
- 20 Wheathampstead

Ward boundaries 2005 are superimposed upon MSA (Middle Super Output Area) boundaries. Each MSA is shaded by Index of Multiple Deprivation (IMD) 2007. For details refer to www.communities.gov.uk. Numbers correspond to ward legend. Ward boundaries may have changed.

Health inequalities: a local perspective

Inequalities in life expectancy (2002-2006) for men and women who live in areas with different levels of deprivation (within this local authority).



95% confidence interval. These indicate the level of uncertainty about each value on the graph. Longer/wider intervals mean more uncertainty. When two intervals do not overlap it is reasonably certain that the two groups are truly different.

Health inequalities: changes over time

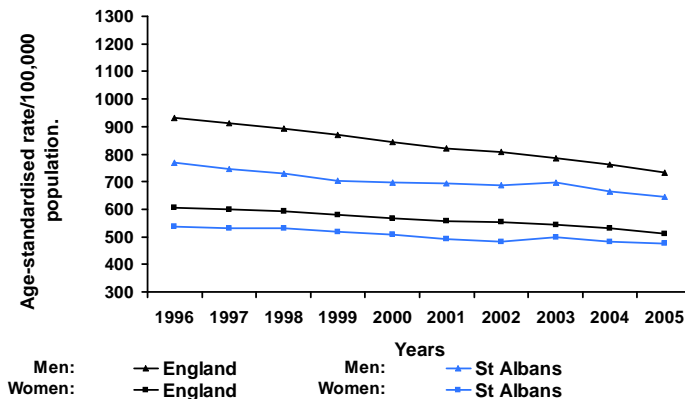
These trend graphs show how changes in health for this local authority compare with changes for the whole of England. Data points are mid-points of 3 year moving averages of annual rates i.e. 1996 represents the 3 year period 1995-97.

Trend 1 compares death rates (at all ages and from all causes) in this local authority with those for England.

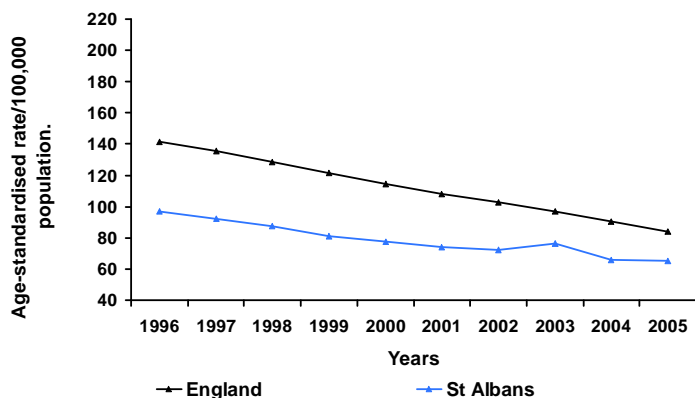
Trend 2 compares rates of early death from heart disease and stroke (in people under 75) in this local authority with those for England.

Trend 3 compares rates of early death from cancer (in people under 75) in this local authority with those for England.

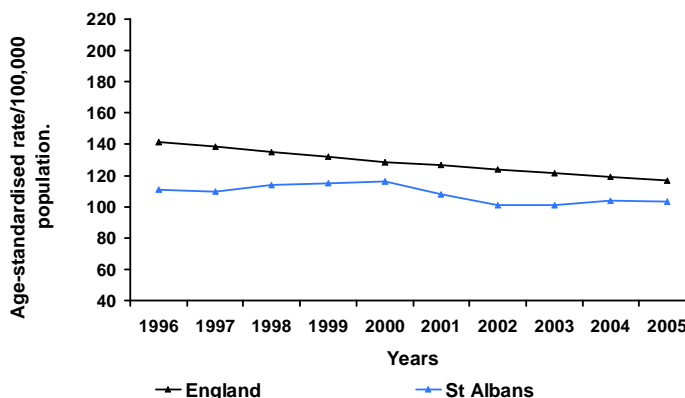
Trend 1: All age, all cause mortality



Trend 2: Early death rates from heart disease and stroke



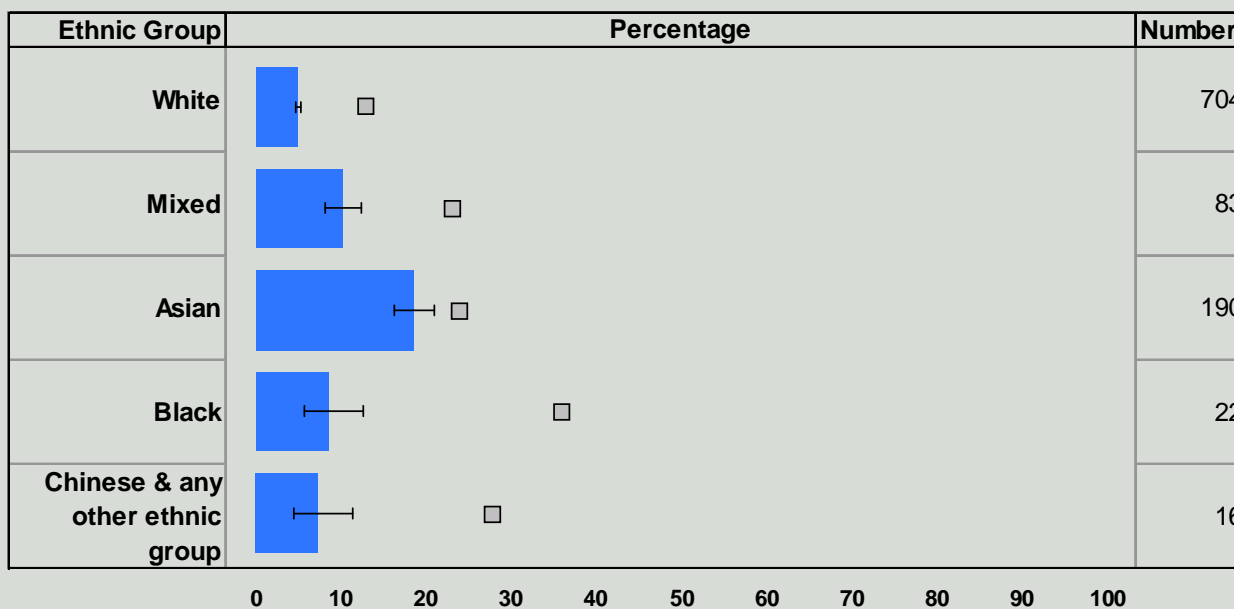
Trend 3: Early death rates from cancer



Health inequalities: ethnicity

This chart compares the percentage of children in each ethnic group who are eligible for free school meals (2007). Eligibility for free school meals is an indicator of deprivation, and people who suffer more deprivation tend to have poorer health. Comparing deprivation by ethnic group helps identify potential health inequalities between groups.

Percentage and number of children eligible for free school meals



Where the total school population in an ethnic group in the local authority is less than 30, no data have been presented and the number column shows n/a. Where the number is less than 5, no percentage is shown.

□ England - average
■ St Albans

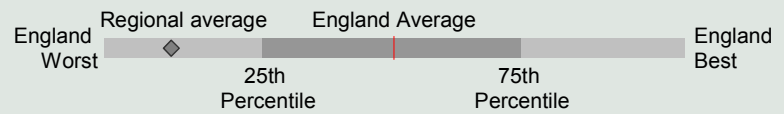
Confidence intervals are shown for local data

Health summary for St Albans

The chart below shows how people's health in this local authority compares to the rest of England. The local result for each indicator is shown as a circle, against the range of results for England which is shown as a bar. A green circle may still indicate an important public health problem.

- Significantly worse than England average
- Not significantly different from England average
- Significantly better than England average
- No significance can be calculated

* relates to National Indicator 2007



Domain	Indicator	Local No. Per Year	Local Value	Eng Avg	Eng Worst	England Range	Eng Best
Our communities	1 Deprivation	0	0.0	19.9	89.2	[Bar with diamond and green circle]	0.0
	2 Children in poverty *	2834	10.2	22.4	66.5	[Bar with diamond and green circle]	6.0
	3 Statutory homelessness	125	2.3	4.4	14.4	[Bar with diamond and green circle]	0.0
	4 GCSE achievement (5 A*-C) *	1517	72.9	60.1	35.8	[Bar with diamond and green circle]	82.7
	5 Violent crime	1713	12.8	19.3	38.9	[Bar with diamond and green circle]	4.5
	6 Carbon emissions *	802	6.2	7.6	20.6	[Bar with diamond and white circle]	4.6
Children and young people's health	7 Smoking in pregnancy	246	13.4	16.1	38.8	[Bar with diamond and green circle]	4.4
	8 Breast feeding initiation *			69.2	33.2	[Bar with diamond]	90.9
	9 Physically active children *	16144	81.6	85.7	63.3	[Bar with red circle]	99.2
	10 Obese children *	140	10.3	9.9	16.1	[Bar with yellow circle]	4.9
	11 Children's tooth decay (at age 5)	n/a	1.0	1.5	3.2	[Bar with diamond and green circle]	0.4
	12 Teenage pregnancy (under 18) *	53	22.2	41.1	83.1	[Bar with diamond and green circle]	12.5
Adults' health and lifestyle	13 Adults who smoke *	n/a	16.4	24.1	40.9	[Bar with diamond and green circle]	13.7
	14 Binge drinking adults	n/a	15.0	18.0	28.9	[Bar with diamond and green circle]	9.7
	15 Healthy eating adults	n/a	31.9	26.3	14.2	[Bar with diamond and green circle]	45.8
	16 Physically active adults	n/a	13.5	11.6	7.5	[Bar with diamond and yellow circle]	17.2
	17 Obese adults	n/a	18.3	23.6	31.2	[Bar with diamond and green circle]	11.9
Disease and poor health	18 Under-15s 'not in good health'	216	8.7	11.6	20.8	[Bar with diamond and green circle]	6.4
	19 Incapacity benefits for mental illness *	1280	15.9	27.5	68.6	[Bar with diamond and green circle]	8.4
	20 Hospital stays related to alcohol *	149	110.6	260.3	741.1	[Bar with diamond and green circle]	87.6
	21 Drug misuse	321	3.7	9.9	34.9	[Bar with diamond and white circle]	1.3
	22 People diagnosed with diabetes	3719	2.8	3.7	5.9	[Bar with diamond and green circle]	2.1
	23 Sexually transmitted infections					[Bar with diamond]	
	24 New cases of tuberculosis	11	8.0	15.0	102.0	[Bar with diamond and green circle]	0.0
	25 Hip fracture in over-65s	106	411.8	479.8	699.8	[Bar with diamond and yellow circle]	219.0
Life expectancy and causes of death	26 Life expectancy - male *	n/a	79.1	77.3	73.0	[Bar with diamond and green circle]	83.1
	27 Life expectancy - female *	n/a	82.5	81.6	78.3	[Bar with diamond and green circle]	87.2
	28 Infant deaths	5	2.6	5.0	10.3	[Bar with diamond and green circle]	0.0
	29 Deaths from smoking	165	171.7	225.4	355.0	[Bar with diamond and green circle]	139.4
	30 Early deaths: heart disease & stroke *	88	65.4	84.2	142.4	[Bar with diamond and green circle]	39.7
	31 Early deaths: cancer *	137	103.3	117.1	167.8	[Bar with diamond and green circle]	76.7
	32 Road injuries and deaths *	111	85.0	56.3	194.6	[Bar with red circle]	20.8

Note (numbers in bold refer to the above indicators)

1 % of people in this area living in 20% most deprived areas of England 2005 2 % of children living in families receiving means-tested benefits 2005 3 Crude rate per 1,000 households 2005-2006 4 % at Key Stage 4 2006-2007 5 Recorded violence against the person crimes (crude rate per 1,000 population) 2006-2007 6 Total end user CO2 emissions per capita (tonnes CO2 per resident) 2005 7 % of mothers smoking in pregnancy where status is known 2006-2007 8 % of mothers initiating breast feeding where status known 2006-2007 9 % 5-16 year olds who spend at least 2 hrs/wk on high quality PE and school sport 2006-2007 10 % Schoolchildren in Reception year. 2006-2007 11 Average (mean) number of teeth per child which were actively decayed, filled, or had been extracted (age 5) 2005-2006 12 Under-18 conception rate per 1,000 females (crude rate) 2004-2006 (provisional) 13 % Modelled estimate from Health Survey for England. 2003-2005 14 % Modelled estimate from Health Survey for England. 2003-2005 15 % Modelled estimate from Health Survey for England. 2003-2005 16 % aged 16+ 2005/06 17 % Modelled estimate from Health Survey for England. 2003-2005 18 % who self assessed general health as 'not good' (directly age standardised) 2001 19 Crude rate per 1,000 working age population. 2006 20 Directly age and sex standardised rate per 100,000 pop. 2006-2007 21 Crude rate per 1000 population aged 15-64. No significance calculated for lower tier authorities. 2004-2005 22 % of people on GP registers with a recorded diagnosis of diabetes. 2005-2006 23 Indicator blank as data not yet available for local authorities. 24 Per 100,000 population (3-year average crude rate) 2004-2006 25 Directly age-standardised rate for emergency admission 2006/07 26 At birth, years 2004-2006 27 At birth, years 2004-2006 28 Rate /1,000 live births 2004-06 29 Per 100,000 population age 35+, directly age standardised rate. 2004-2006 30 Directly age standardised rate/100,000 pop. under 75 2004-2006 31 Directly age standardised rate/100,000 pop. under 75 2004-2006 32 Per 100,000 population (3-year average crude rate) 2004-2006

For more information from your regional PHO, visit www.apho.org.uk

You may use this profile for non-commercial purposes provided the source is acknowledged. 'Source: APHO and Department of Health. © Crown Copyright 2008.'